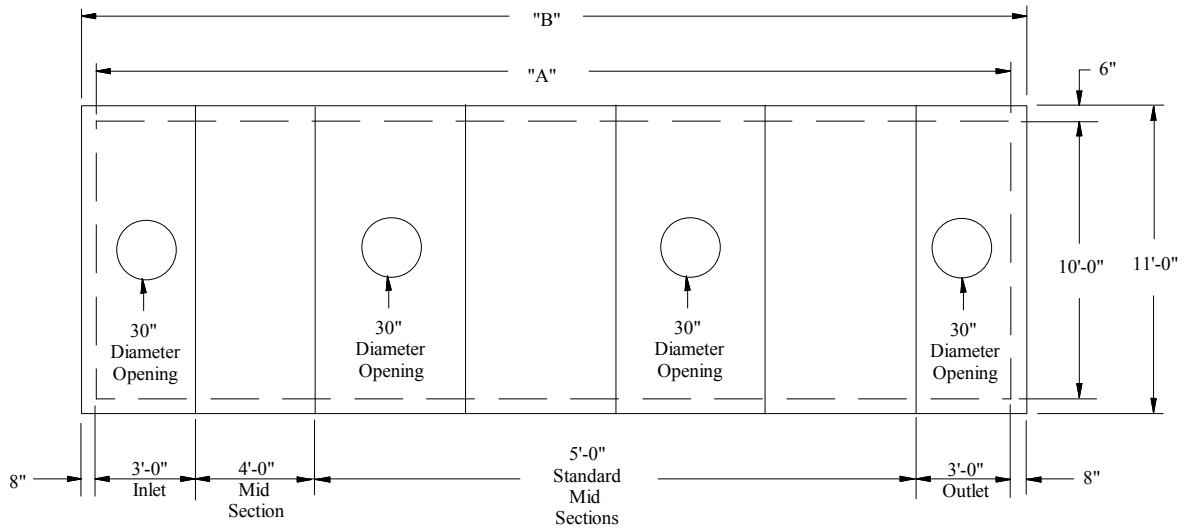


**SHOREY  
PRECAST  
CONCRETE  
PRODUCTS**

**TUNNEL TANK  
47,000 Gallons  
Top View**



GALLONS	"A"	"B"	3'-0"	3'-0"	4'-0"	5'-0"	Total Tank Weight
			Start/ Ends	Mid Sections	Mid Sections	Mid Sections	
			20,715 lbs	9,710 lbs	12,945 lbs	16,180 lbs	
47,000	93'-0"	94'-4"	2	0	3	15	322,965 lbs

- Concrete Minimum Strength: 5,000 P.S.I @ 28 days
- Steel Reinforcement: AS-615-68, Grade 60
- Design Loading: AASHTO - H-20
- Meets ASTM Spec. C1227

**SHOREY PRECAST CONCRETE PRODUCTS**

351 Whites Path

S. Yarmouth, MA 02664

(800) 439-0965 • (508) 760-1070