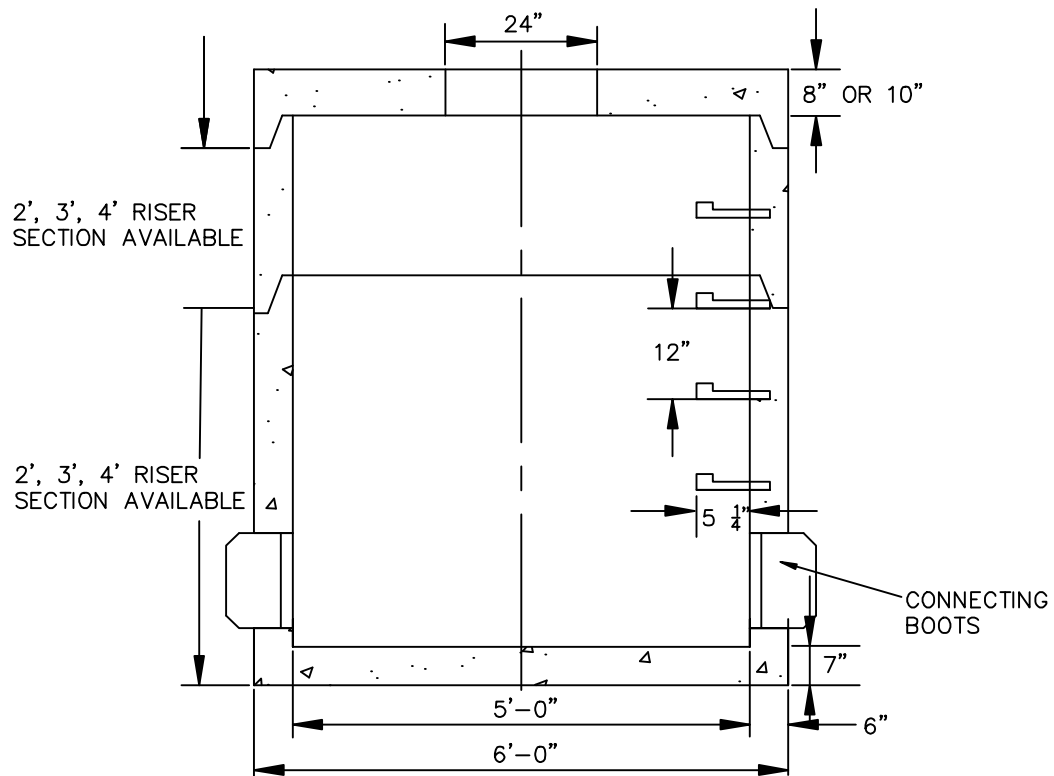


# SEWER MANHOLE FLAT TOP - 5'-0" DIA. (H-20) SMH-5DIA-H-20



OPTIONAL:  
Connecting Boots: Press-Seal PSX ASTM C923  
Tar Coating: Conseal CS-55  
Joint Seal: Pro Stick Butyl Sealant  
Steps: Copolymer Polypropylene ASTM C-478

## SPECIFICATIONS

- Concrete Minimum Strength: 5,000 P.S.I @ 28 days
- Steel Reinforcement: AS-615-68, Grade 60
- Design Loading: AASHTO - H-20 Meets ASTM Spec. C1227
- Meets ASTM C-478