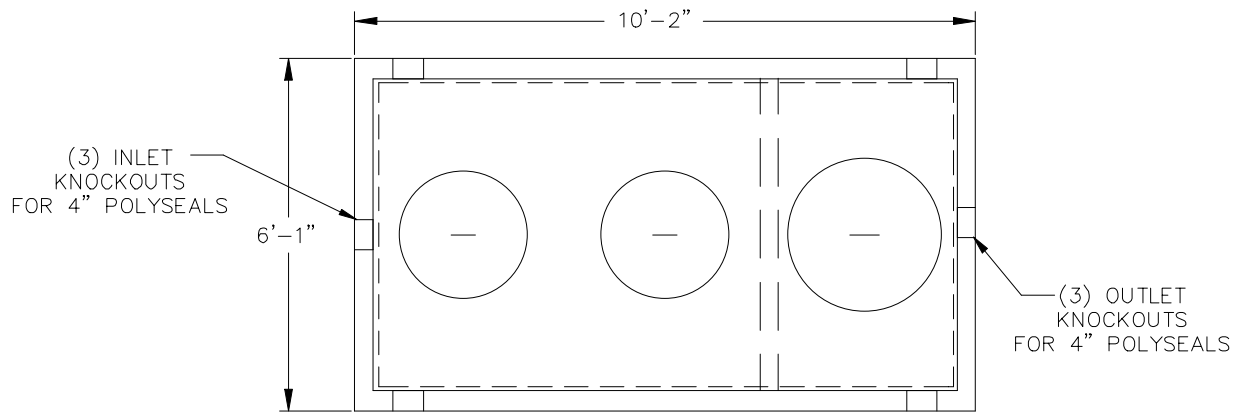
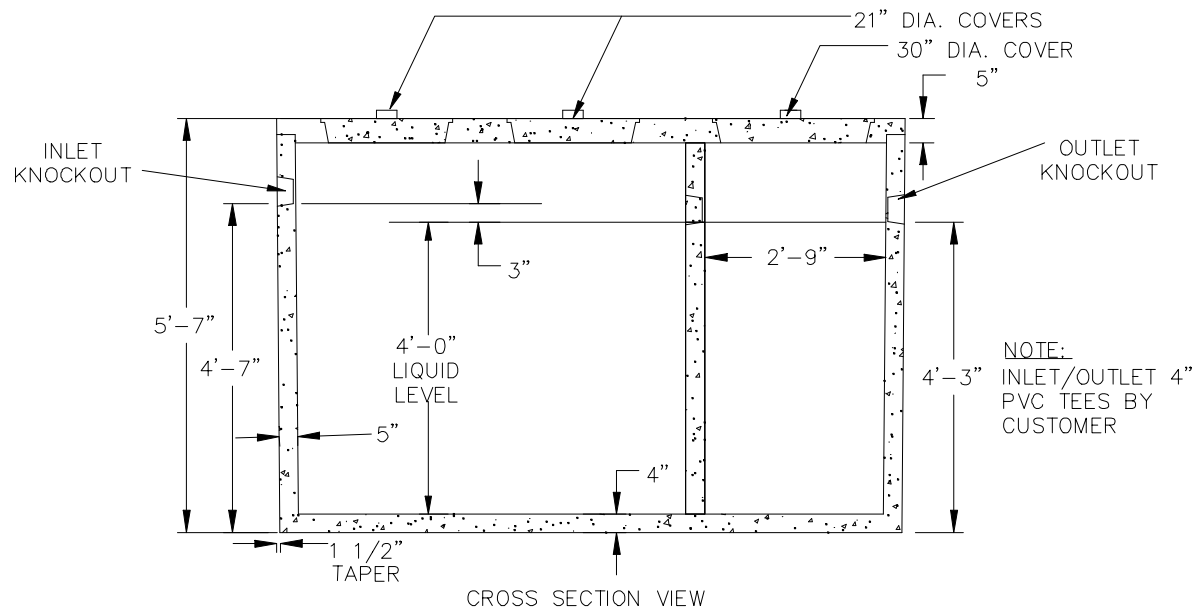


# 1,500 GALLON (H-10) 2 compartment - MONO TANK

## 1,000 GALLON / 500 GALLON



PLAN VIEW



CROSS SECTION VIEW

## SPECIFICATIONS

- Concrete Minimum Strength: 4,000 P.S.I @ 28 days
- Steel Reinforcement: AS-615-68, Grade 60
- Design Loading: AASHTO - H-10
- Meets ASTM Spec. C1227
- Weight: 13,633 lbs.